



**TO:** ALL PLAN HOLDERS

**FROM:** NANCY MAGER, NPSR ARCHITECTS, INC.

**DATE:** June 12, 2023

**PROJECT:** Tasker Arena Alterations

**PROJECT NO:** 22-110

**ADDENDUM NO:** 1

**PAGES:** 12 including this cover sheet

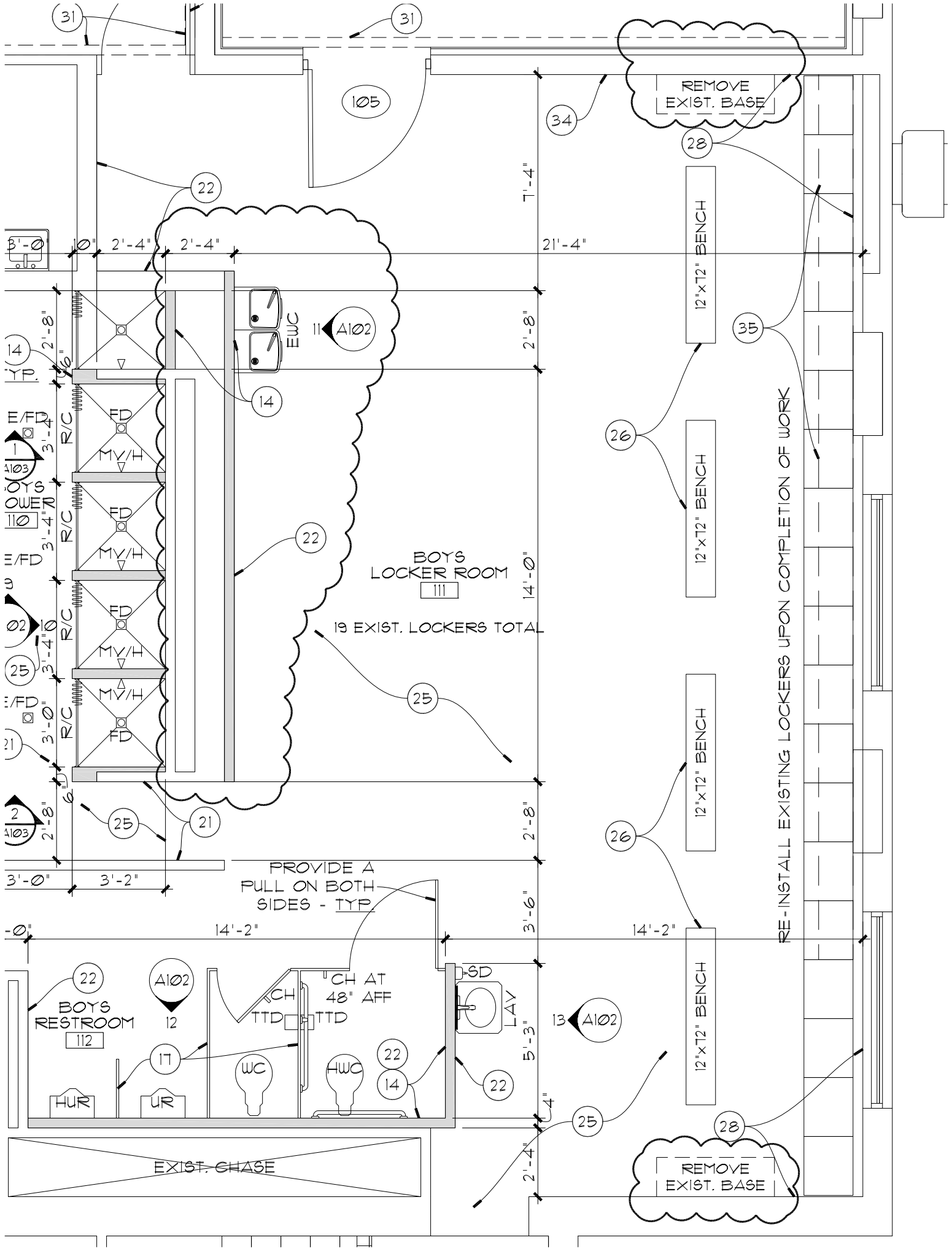
---



**ADDENDUM #1**  
**Tasker Arena Locker Room Renovations**  
**FOR**  
**HOBBS MUNICIPAL SCHOOLS**  
**Architects Project #22-110**  
**June 12, 2023**

The following addenda items shall be incorporated into the Plans and Specifications and become a part of the Contract Documents.

1. Girls Locker room 102 and Girls Restroom 103 flooring shall be new paint and new rubber base. All other areas shown to have new flooring shall have the athletic flooring as noted.
2. See revised Plumbing and Electrical sheets that are attached for correct shower stall configuration, sewer line routing and shower schedule.
3. Disregard Section 07700 in specification manual, this section does not apply to this project.
4. The owner will be providing soap, towel and toilet paper dispensers in the restroom areas.
5. Remove both existing concrete locker bases at north and south walls in Boys Locker Room 111. (see attached sketch)
6. Install metal stud furring along west wall of Boys Locker Room 111 to hide exposed plumbing, finish as noted. (see attached sketch)
7. The basement is located underneath Boys Restroom 104 and Boys Locker Room 105.
8. Benches shall be 1 ¼" thick maple hardwood top with rounded edges and clear finish, "black" powder coated pedestals with concealed anchors and caps.
9. See attached prevailing wage rates.





# TYPE "B" – GENERAL BUILDING

Effective January 1, 2023

| Trade Classification  | Base Rate | Fringe Rate | Apprenticeship |
|---|-----------|-------------|----------------|
| Asbestos Workers/Heat and Frost insulators                    | 35.56     | 12.26       | 0.60           |
| Asbestos Workers/Heat and Frost insulators: Los Alamos County | 37.99     | 12.26       | 0.60           |
| Boilermaker/blacksmith  | 35.88     | 32.28       | 0.60           |
| Boilermaker/blacksmith: San Juan County                       | 36.83     | 31.88       | 0.60           |
| Bricklayer/Block layer/Stonemason                             | 24.97     | 9.50        | 0.60           |
| Carpenter/Lather  | 27.73     | 12.14       | 0.60           |
| Carpenter: Los Alamos County                                  | 33.18     | 13.58       | 0.60           |
| Millwright/pile driver  | 37.10     | 28.30       | 0.60           |
| Cement Mason  | 23.04     | 11.30       | 0.60           |

## Electricians-Outside Classifications: Zone 1

|                       |       |       |      |
|-----------------------|-------|-------|------|
| Ground man            | 25.43 | 11.76 | 0.60 |
| Equipment Operator    | 36.48 | 16.09 | 0.60 |
| Lineman or technician | 46.09 | 18.52 | 0.60 |
| Cable Splicer         | 47.22 | 18.81 | 0.60 |

## Electricians-Outside Classification: Zone 2

|                       |       |       |      |
|-----------------------|-------|-------|------|
| Ground man            | 25.43 | 11.76 | 0.60 |
| Equipment Operator    | 36.48 | 16.09 | 0.60 |
| Lineman or technician | 46.09 | 18.52 | 0.60 |
| Cable Splicer         | 47.22 | 18.81 | 0.60 |

## Electricians-Outside Classifications: Los Alamos County

|                       |       |       |      |
|-----------------------|-------|-------|------|
| Ground man            | 26.15 | 11.78 | 0.60 |
| Equipment Operator    | 37.54 | 16.13 | 0.60 |
| Lineman or technician | 47.29 | 18.82 | 0.60 |
| Cable Splicer         | 51.93 | 19.98 | 0.60 |

**Trade Classification****Base Rate****Fringe Rate****Apprenticeship****Electricians-Inside Classifications: Zone 1**

|                                |       |       |      |
|--------------------------------|-------|-------|------|
| Wireman/low voltage technician | 36.75 | 12.40 | 0.60 |
| Cable Splicer                  | 40.43 | 12.51 | 0.60 |

**Electricians-Inside Classification: Zone 2**

|                                |       |       |      |
|--------------------------------|-------|-------|------|
| Wireman/low voltage technician | 40.06 | 12.50 | 0.60 |
| Cable Splicer                  | 43.74 | 12.61 | 0.60 |

**Electricians-Inside Classification: Zone 3**

|                                |       |       |      |
|--------------------------------|-------|-------|------|
| Wireman/low voltage technician | 42.26 | 12.57 | 0.60 |
| Cable Splicer                  | 45.94 | 12.68 | 0.60 |

**Electricians-Inside Classification: Zone 4**

|                                |       |       |      |
|--------------------------------|-------|-------|------|
| Wireman/low voltage technician | 46.31 | 12.69 | 0.60 |
| Cable Splicer                  | 49.99 | 12.80 | 0.60 |

**Electricians-Inside Classification: Doña Ana, Hidalgo, Luna and Otero Counties**

|                                |       |      |      |
|--------------------------------|-------|------|------|
| Wireman/low voltage technician | 32.07 | 9.81 | 0.60 |
| Cable splicer                  | 32.07 | 9.81 | 0.60 |

**Electricians-Inside Classification: Los Alamos County**

|                                    |       |       |      |
|------------------------------------|-------|-------|------|
| Wireman/low voltage technician     | 42.26 | 14.68 | 0.60 |
| Cable Splicer                      | 45.94 | 14.98 | 0.60 |
| <b>Elevator Constructor</b>        | 48.93 | 37.49 | 0.60 |
| <b>Elevator Constructor Helper</b> | 39.14 | 37.49 | 0.60 |

**Glazier**

|                                   |       |      |      |
|-----------------------------------|-------|------|------|
| Journeyman/Fabricator             | 21.25 | 6.70 | 0.60 |
| Delivery Driver                   | 12.00 | 6.70 | 0.60 |
| <b>Glazier: Los Alamos County</b> | 21.25 | 6.70 | 0.60 |
| <b>Painter</b>                    | 18.25 | 8.50 | 0.60 |

| Trade Classification  | Base Rate | Fringe Rate | Apprenticeship |
|---|-----------|-------------|----------------|
| <b>Painter: Los Alamos County</b>   | 29.51     | 10.35       | 0.60           |
| <b>Paper Hanger</b>   | 18.25     | 8.50        | 0.60           |
| <b>Paper Hanger: Los Alamos County</b>  | 29.51     | 10.35       | 0.60           |
| <b>Ironworker</b>   |           |             |                |
| Ironworker Journeyman   | 28.05     | 18.30       | 0.60           |
| Probationary Ironworker   | 22.44     | 18.30       | 0.60           |
| <b>Drywall Finisher/Taper - Light Commercial &amp; Residential</b>                    |           |             |                |
| Ames tool operator  | 26.82     | 8.40        | 0.60           |
| Hand finisher/machine texture   | 25.82     | 8.40        | 0.60           |
| <b>Drywall Finisher/Taper – Light Commercial &amp; Residential: Los Alamos County</b> | 29.51     | 10.35       | 0.60           |
| <b>Plasterer</b>  | 24.34     | 9.79        | 0.60           |
| <b>Plumber/Pipefitter</b>   | 35.11     | 13.40       | 0.60           |
| <b>Roofer</b>   |           |             |                |
| Roofer Journeyman   | 26.94     | 9.36        | 0.60           |
| Roofer Helper   | 16.16     | 9.36        | 0.60           |
| <b>Sheet Metal Worker</b>   |           |             |                |
| Zone 1  | 35.44     | 19.00       | 0.60           |
| Zone 2 – Industrial   | 36.44     | 19.00       | 0.60           |
| Zone 3 – Los Alamos County  | 37.44     | 19.00       | 0.60           |
| <b>Soft Floor Layer</b>   | 21.00     | 9.20        | 0.60           |
| <b>Soft Floor Layer: Los Alamos County</b>  | 29.55     | 10.45       | 0.60           |
| <b>Sprinkler Fitter</b>   | 34.18     | 24.44       | 0.60           |
| <b>Tile Setter</b>  | 24.46     | 8.81        | 0.60           |
| <b>Tile Setter Helper/Finisher</b>  | 16.53     | 8.81        | 0.60           |

**Trade Classification****Base Rate****Fringe Rate****Apprenticeship****Laborers**

|                         |       |      |      |
|-------------------------|-------|------|------|
| Group I- Unskilled      | 19.25 | 7.93 | 0.60 |
| Group II – Semi-skilled | 19.25 | 7.93 | 0.60 |
| Group III- Skilled      | 20.25 | 7.93 | 0.60 |
| Group IV - Specialty    | 22.50 | 7.93 | 0.60 |

**Masonry Laborers**

|                                     |       |      |      |
|-------------------------------------|-------|------|------|
| Group I- Unskilled and Semi-Skilled | 19.75 | 8.09 | 0.60 |
| Group II- Skilled                   | 21.50 | 8.09 | 0.60 |
| Group III- Specialty                | 22.00 | 8.09 | 0.60 |

**Operators**

|            |       |      |      |
|------------|-------|------|------|
| Group I    | 23.32 | 7.67 | 0.60 |
| Group II   | 25.48 | 7.67 | 0.60 |
| Group III  | 25.94 | 7.67 | 0.60 |
| Group IV   | 26.38 | 7.67 | 0.60 |
| Group V    | 26.57 | 7.67 | 0.60 |
| Group VI   | 26.78 | 7.67 | 0.60 |
| Group VII  | 26.89 | 7.67 | 0.60 |
| Group VIII | 29.93 | 7.67 | 0.60 |
| Group IX   | 32.32 | 7.67 | 0.60 |
| Group X    | 35.72 | 7.67 | 0.60 |

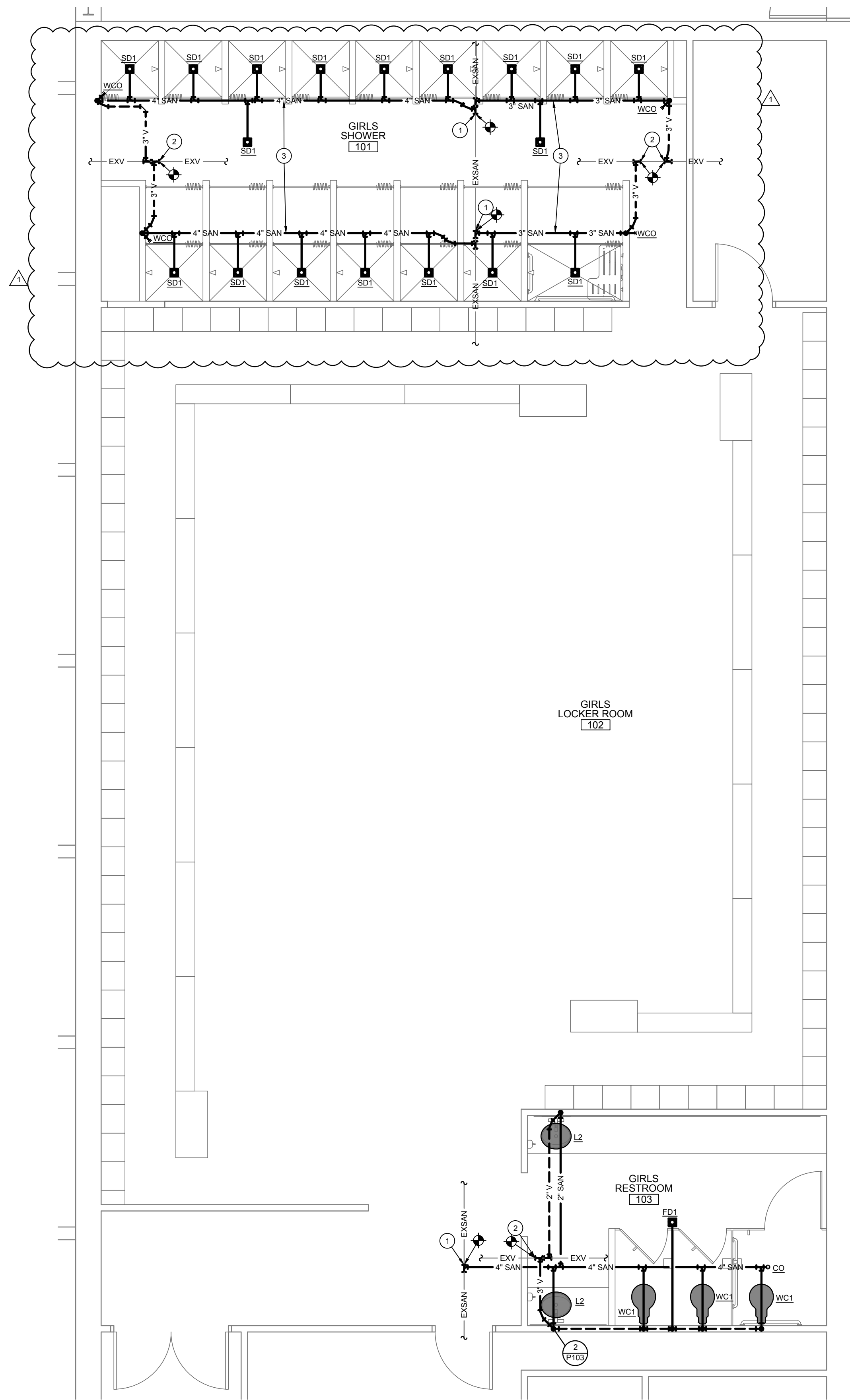
**Truck Drivers**

|             |       |      |      |
|-------------|-------|------|------|
| Group I-VII | 16.65 | 8.27 | 0.60 |
| Group VIII  | 16.71 | 8.27 | 0.60 |
| Group IX    | 18.65 | 8.27 | 0.60 |

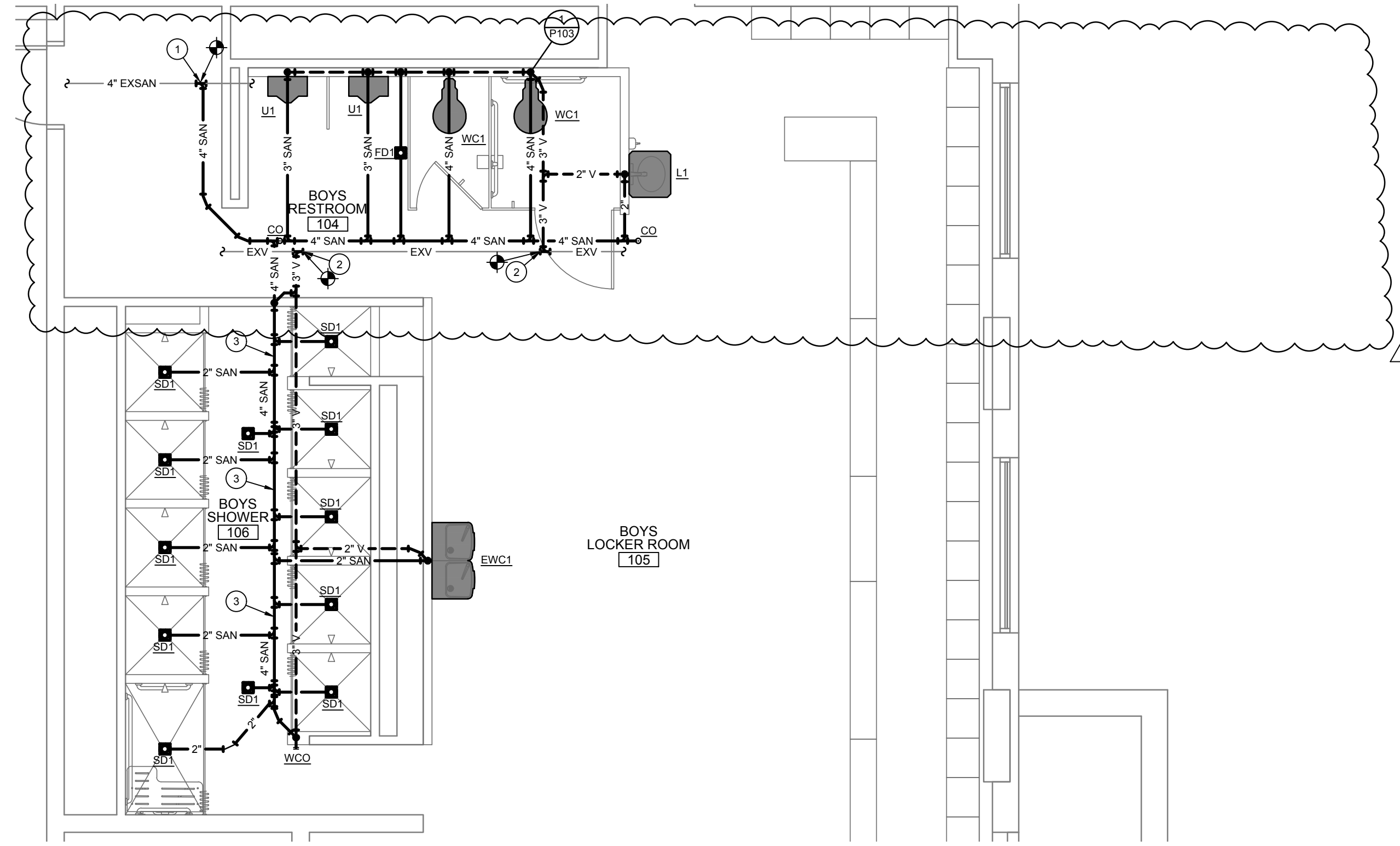
**NOTE: All contractors are required to pay SUBSISTENCE, ZONE, AND INCENTIVE PAY according to the particular trade. More information available at <https://www.dws.state.nm.us/public-works>.**

For more information about the Subsistence, Zone, and Incentive Pay rates, or to file a wage claim, contact the New Mexico Department of Workforce Solutions Labor Relations Division at (505) 841-4400 or visit us online at [www.dws.state.nm.us](http://www.dws.state.nm.us).

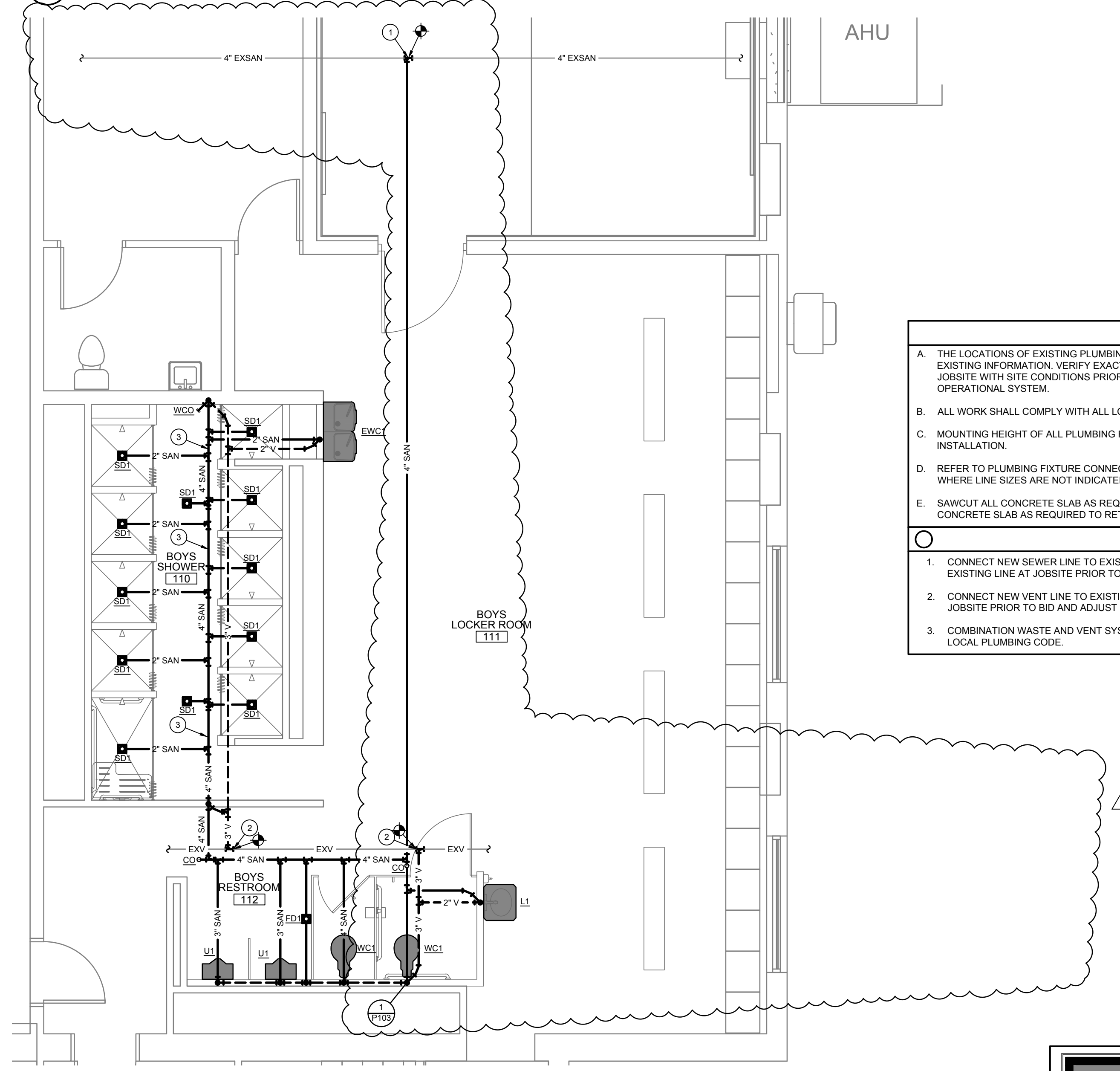




**1 ENLARGED PARTIAL FLOOR PLAN - PLUMBING - SEWER, WASTE, & VENT**  
Scale: 1/4" = 1'-0"



**2 ENLARGED PARTIAL FLOOR PLAN - PLUMBING - SEWER, WASTE, & VENT**  
Scale: 1/4" = 1'-0"



**3 ENLARGED PARTIAL FLOOR PLAN - PLUMBING - SEWER, WASTE, & VENT**  
Scale: 1/4" = 1'-0"

- GENERAL NOTES**
- THE LOCATIONS OF EXISTING PLUMBING LINES SHOWN ARE BASED ON MINIMAL AVAILABLE SITE AND EXISTING INFORMATION. VERIFY EXACT LOCATION OF ALL NEW AND EXISTING UTILITIES AND PIPING AT THE JOBSITE WITH SITE CONDITIONS PRIOR TO BID AND INCLUDE ALL COSTS FOR A COMPLETE AND OPERATIONAL SYSTEM.
  - ALL WORK SHALL COMPLY WITH ALL LOCAL AND STATE CODES AND AUTHORITIES HAVING JURISDICTION.
  - MOUNTING HEIGHT OF ALL PLUMBING FIXTURES SHALL BE COORDINATED WITH ARCHITECT PRIOR TO INSTALLATION.
  - REFER TO PLUMBING FIXTURE CONNECTION SCHEDULE FOR RUNOUT LINE SIZES TO INDIVIDUAL FIXTURES WHERE LINE SIZES ARE NOT INDICATED ON FLOOR PLAN.
  - SAWCUT ALL CONCRETE SLAB AS REQUIRED TO INSTALL NEW PLUMBING LINES. PATCH AND REPAIR ALL CONCRETE SLAB AS REQUIRED TO RETURN TO EXISTING CONDITIONS AS DIRECTED BY ARCHITECT.
- KEYED NOTES**
- CONNECT NEW SEWER LINE TO EXISTING SEWER LINE. VERIFY EXACT LOCATION AND DEPTH OF EXISTING LINE AT JOBSITE PRIOR TO BID AND ADJUST ROUTING OF NEW PIPING AS REQUIRED.
  - CONNECT NEW VENT LINE TO EXISTING VENT LINE. VERIFY EXACT LOCATION OF EXISTING LINE AT JOBSITE PRIOR TO BID AND ADJUST ROUTING OF NEW PIPING AS REQUIRED.
  - COMBINATION WASTE AND VENT SYSTEM FOR ALL SHOWER DRAINS. INSTALL PER REQUIREMENTS OF LOCAL PLUMBING CODE.



**FINCHER ENGINEERING, LLC**  
TX FIRM #F-16408  
5621 114TH ST., SUITE 100  
LUBBOCK, TX 79424  
PH: 806-701-5109  
WWW.FINCHERENG.COM

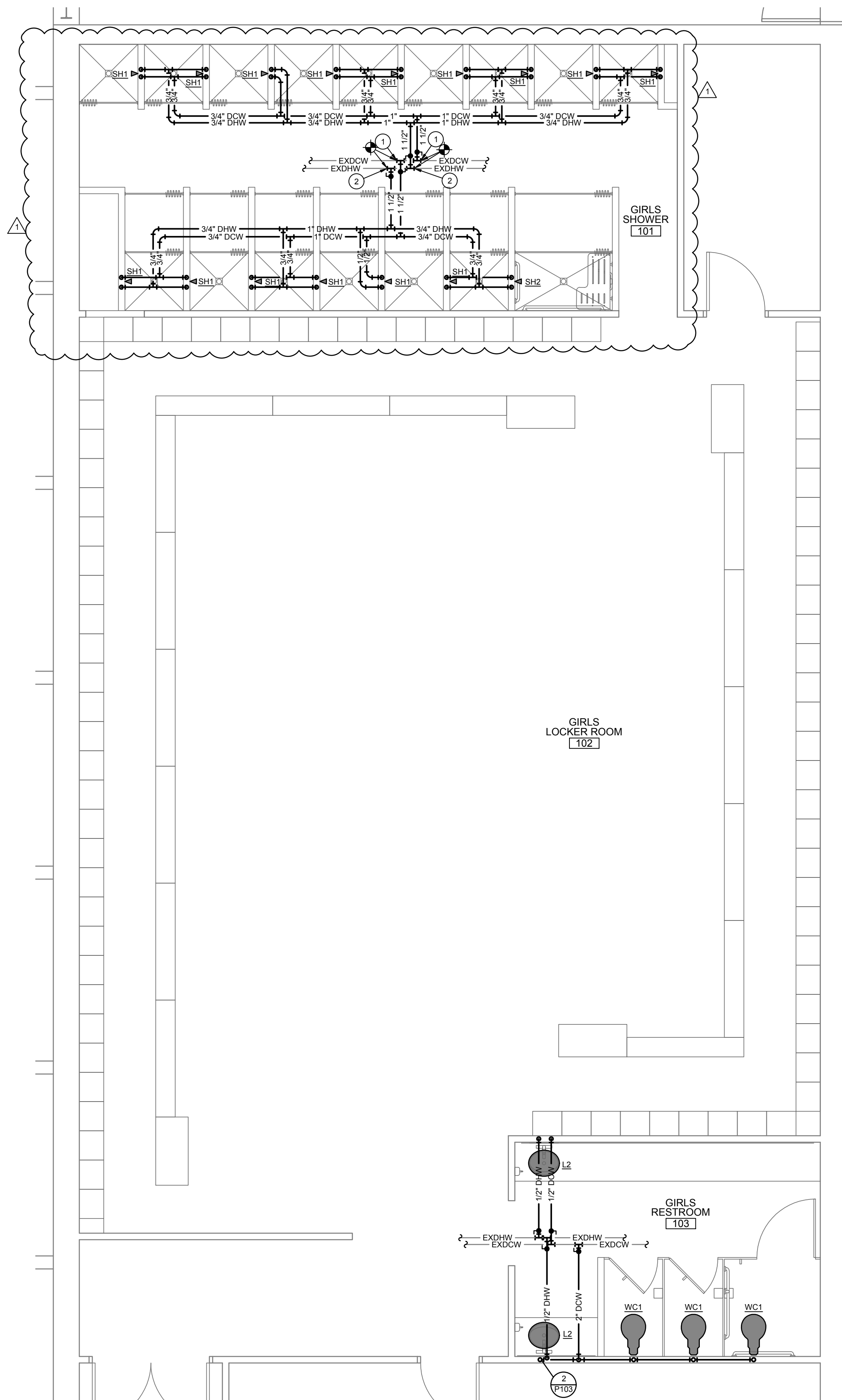
This document and the ideas and designs incorporated herein, is an instrument of professional service and is the property of NPSR Architects, Inc. It is not to be used, in whole or in part, for any other project without the written authorization of NPSR Architects, Inc.

**NPSR ARCHITECTS, Inc.**  
606 WEST PIERCE ST.  
PO BOX 230  
LUBBOCK, TEXAS 79408  
PH: 806-775-8854, 4775  
FAX: 575-885-4827  
220 BROADWAY ST.  
SUITE 400  
HOBBBS, TEXAS 79424  
PH: 575-433-4775  
FAX: 575-433-4777  
www.npsr.pro

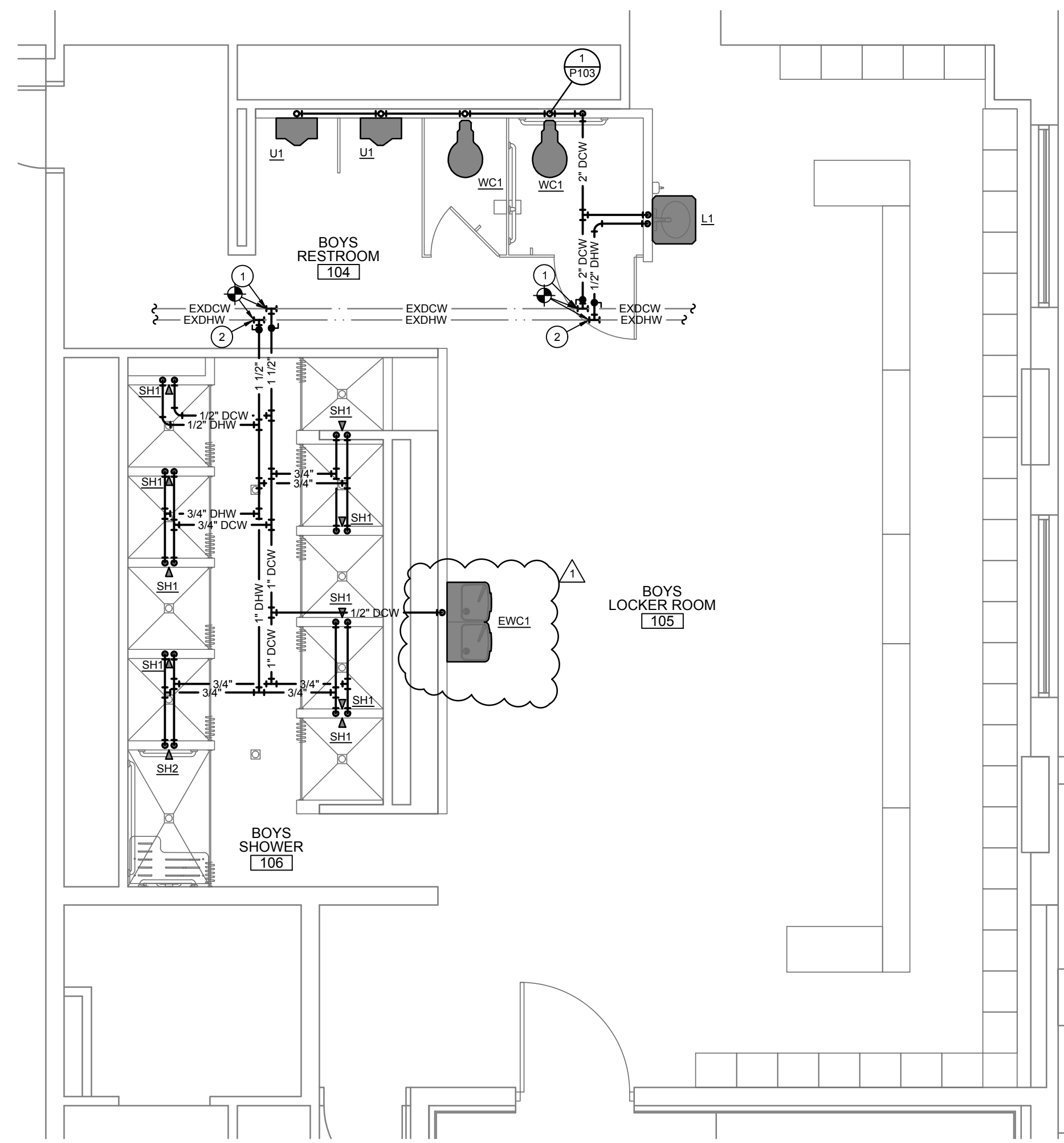
**LOCKER ROOM RENOVATIONS**  
FOR  
**TASKER ARENA**  
**HOBBS MUNICIPAL SCHOOLS**  
HOBBS, NEW MEXICO  
1400 E. SCHARBAUER ST.

| DATE     | DESCRIPTION            |
|----------|------------------------|
| 06-12-23 | ADDENDUM #1            |
| 09-30-23 | CONSTRUCTION DOCUMENTS |

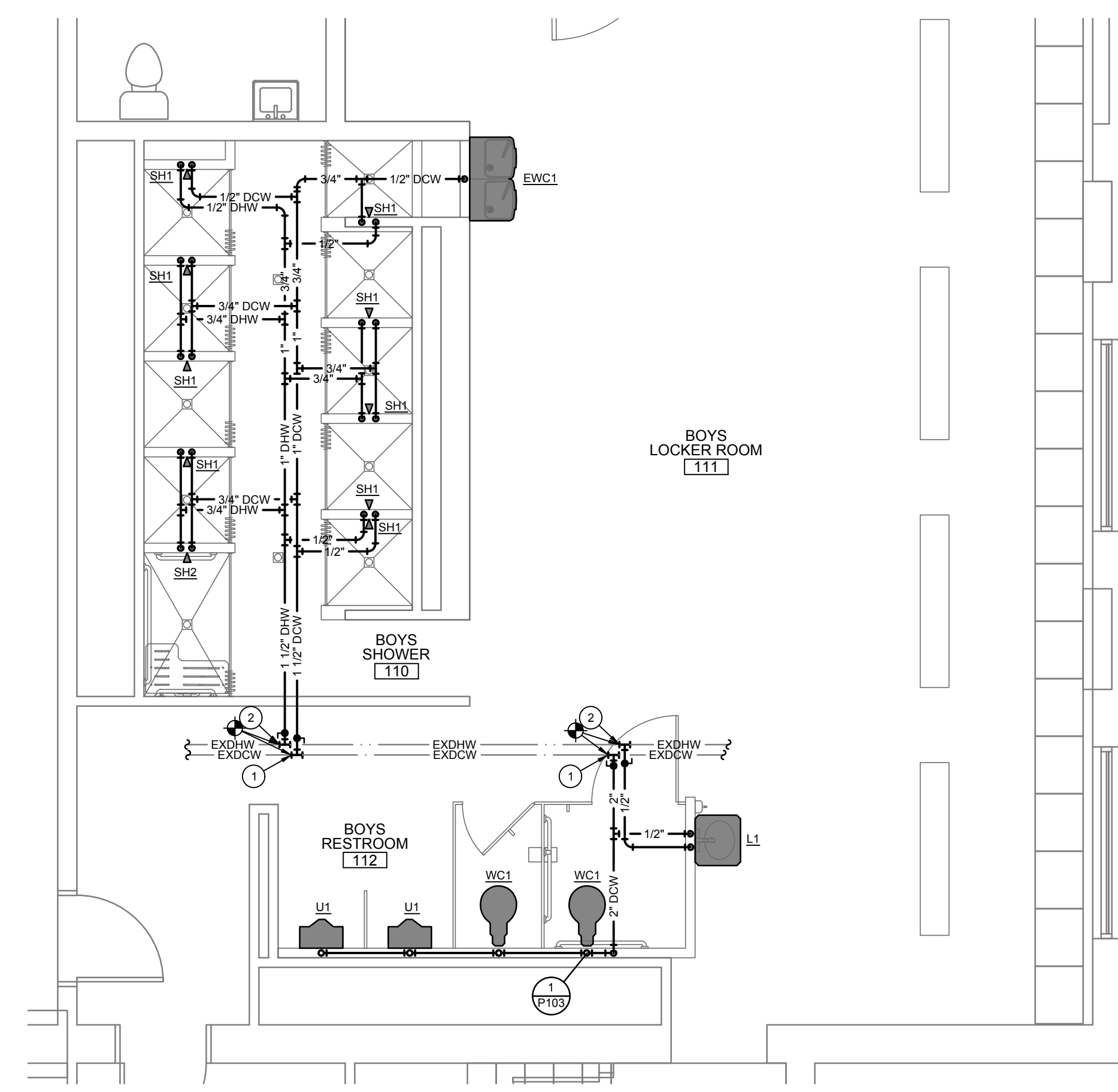
|             |     |
|-------------|-----|
| PROJECT NO. | TFE |
| DESIGN BY:  | TFE |
| CKD BY:     | TFE |
| APPROVD BY: | TFE |



1 ENLARGED PARTIAL FLOOR PLAN - PLUMBING - WATER  
Scale: 1/4" = 1'-0"



2 ENLARGED PARTIAL FLOOR PLAN - PLUMBING - WATER  
Scale: 1/4" = 1'-0"

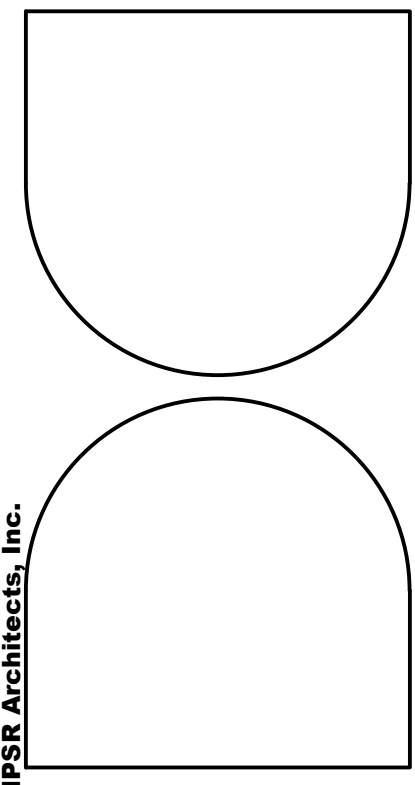


3 ENLARGED PARTIAL FLOOR PLAN - PLUMBING - WATER  
Scale: 1/4" = 1'-0"

- GENERAL NOTES**
- THE LOCATIONS OF EXISTING PLUMBING LINES SHOWN ARE BASED ON MINIMAL AVAILABLE SITE AND EXISTING INFORMATION. VERIFY EXACT LOCATION OF ALL NEW AND EXISTING UTILITIES AND PIPING AT THE JOBSITE WITH SITE CONDITIONS PRIOR TO BID AND INCLUDE ALL COSTS FOR A COMPLETE AND OPERATIONAL SYSTEM.
  - MOUNTING HEIGHT OF ALL PLUMBING FIXTURES SHALL BE COORDINATED WITH ARCHITECT PRIOR TO INSTALLATION.
  - REFER TO PLUMBING FIXTURE CONNECTION SCHEDULE FOR RUNOUT LINE SIZES TO INDIVIDUAL FIXTURES WHERE LINE SIZES ARE NOT INDICATED ON FLOOR PLAN.
  - PROVIDE POINT-OF-USE MIXING VALVE BELOW ALL LAVATORIES AND HAND SINKS AND SET TO PROVIDE MAXIMUM OF 100°F WATER TO HOT WATER SIDE OF ALL FAUCETS. VERIFY MOUNTING LOCATION OF MIXING VALVE WITH OWNER AND WITH ADA CLEARANCE. MIXING VALVE SHALL BE EQUAL TO BRADLEY 559.
  - PROVIDE CEILING MOUNTED ACCESS DOORS TO ACCESS ANY VALVES THAT ARE INSTALLED ABOVE INACCESSIBLE CEILINGS.
- KEYED NOTES**
- CONNECT NEW DCW LINE TO EXISTING DCW LINE. VERIFY EXACT LOCATION AND SIZE OF EXISTING LINE AT JOBSITE PRIOR TO BID AND ADJUST ROUTING OF NEW PIPING AS REQUIRED.
  - CONNECT NEW DHW LINE TO EXISTING DHW LINE. VERIFY EXACT LOCATION AND SIZE OF EXISTING LINE AT JOBSITE PRIOR TO BID AND ADJUST ROUTING OF NEW PIPING AS REQUIRED.



**FINCHER ENGINEERING, LLC**  
TX FIRM #F-16408  
5621 114TH ST., SUITE 100  
LUBBOCK, TX 79424  
PH: 806-701-5109  
WWW.FINCHERENG.COM



66 WEST PIERCE ST.  
HOBBBS, NM 88240  
PH: 575.885.4775  
FAX: 575.885.4827

220 BROADWAY ST.  
SUITE 400  
HOBBBS, NM 88240  
PH: 575.433.4775  
FAX: 575.433.4777  
www.npsr.pro

**LOCKER ROOM RENOVATIONS**  
FOR  
**TASKER ARENA**  
**HOBBS MUNICIPAL SCHOOLS**  
HOBBS, NEW MEXICO  
1400 E. SCHARBAUER ST.

| PROJECT NO. | DATE                   | DESCRIPTION |
|-------------|------------------------|-------------|
| 06-12-23    | ADDENDUM #1            |             |
| 09-30-23    | CONSTRUCTION DOCUMENTS |             |

|              |    |
|--------------|----|
| PROJECT NO.  | FE |
| DRAWN BY:    | TF |
| CHECKED BY:  | TF |
| APPROVED BY: | TF |

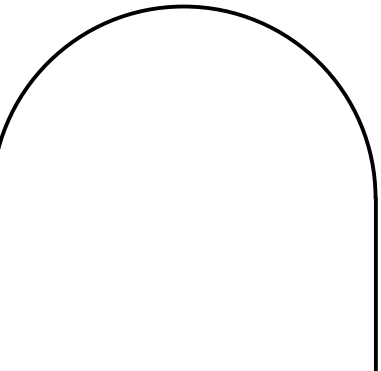
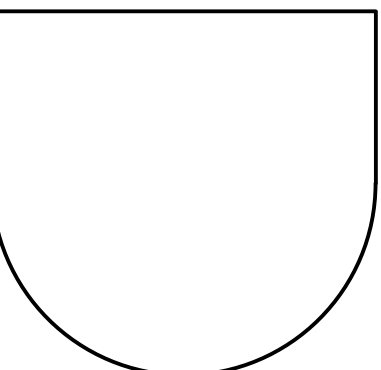
SHEET TITLE: **P102**  
**PLUMBING**  
SHEET 3 OF 5

This document and the ideas and designs incorporated herein, is an instrument of professional service and is the property of NPSR Architects, Inc. It is not to be used, in whole or in part, for any other project without the written authorization of NPSR Architects, Inc.

| PLUMBING SPECIFICATIONS   |   |
|---|---|
| I. GENERAL  | III. EXECUTION  |
| A. NOTE:  | A. INSTALLATION OF PIPING SYSTEMS:  |
| 1. Conform with applicable provisions of the General Conditions, Special Conditions, General Requirements, and Supplemental Conditions.   | 1. Drain lines and Sanitary waste: Grade down toward the sewer connection at a uniform slope of 1/4" per foot to serve individual fixtures or not less than 1/8" per foot to serve multiple stacks or outlets. Slope shall be greater where possible.   |
| B. SUBMITTALS:  | 2. Vents: Grade up to the vent through the roof. Terminate not less than 12" above the roof.  |
| 1. Submit manufacturer's data on all materials.   | 3. Water Lines: Grade to established low points and provide valved drains to completely drain the system.   |
| C. SCOPE:   | 4. Isolation Valves: The water supplies to each group of fixtures shall have an isolating valve in each line serving the riser. Where these valves are not accessible thru removable ceilings or otherwise, provide access doors in the ceiling or chase.   |
| 1. This section of the specifications requires the furnishing and installation of all equipment, labor, materials, transportation, tools and appliances and in performing all operations in connection with the installation of the plumbing systems.   | B. FABRICATION OF PIPE JOINTS:  |
| D. UTILITY SERVICES:  | 1. Threaded Pipes: Ream and deburr pipe after it is cut and before it is threaded. Stand each pipe on one end and hammer to remove all foreign material. Full cut threads, but not more than 3 pipe threads shall remain exposed when joint is completed. Make up joints with graphite and oil or an approved graphite compound applied to male threads only. Caulking of threaded joints to stop or prevent leaks is prohibited.   |
| 1. Water Service: Connect to the existing water service line at the site. Refer to the drawings for details. Provide a valve and valve box at the connection point.   | 2. Copper Tubing with soldered joints: Cut tubing square, ream and deburr. Clean insides of fittings and outsides of tubing with sand cloth before assembly. Exercise care to prevent annealing of fittings and hard drawn tubing. Make all joints with high temperature solid string or wire solder, 95% tin, 5% antimony, using non-corrosive paste flux of the proper type for all copper tubing. Low temperature solder such as 50/50 or 40/60 will not be permitted.   |
| 2. Sanitary Sewer: Extend and connect to the existing sewer at the site as shown on the drawings.   | 3. Copper Tubing with press joints:   |
| 3. It is the responsibility of the Contractor to provide all required components and pay all required fees as required by local utility company to provide Owner with a complete and operational system.  | a) Copper tube ends shall be cut square. The inside of the tube end shall be reamed to the full inside diameter of the tube and the outside of the tube end chamfered to remove any outside burrs. The outside of the tube end shall be cleaned with a clean cotton cloth to remove grease or dirt.   |
| II. PRODUCTS:   | b) Fittings shall be inspected to make sure the sealing element is properly seated into the fitting. The sealing element is pre lubricated with a food grade lubricant. No field lubrication shall be applied to the sealing element.   |
| A. MATERIALS:   | c) Copper tube ends shall be inserted into the fitting to the full insertion depth of the fitting cup. A mark shall be made on the tube wall at the interface of the tube and fitting. Always insure the tube is fully inserted into the fitting prior to pressing the joint.   |
| 1. Sanitary Soil, Waste and Drain Lines: PVC-DWV Plastic Sch. 40 Solid Wall pipe and fittings conforming to ASTM D-2665-68, assembled with solvent cement conforming to ASTM D-2564-67.   | d) Always make sure the appropriately sized jaw or ring and actuator is selected for the joint being pressed. The Ridged XL Ring Kit shall be used to press 2-1/2" thru 4" bronze fittings. A Ridged XLC Ring Kit shall be used to press 2-1/2" thru 4" copper fittings.  |
| 2. Sanitary Vent Lines: PVC-DWV Plastic pipe and fittings conforming to ASTM D-2665-68, assembled with solvent cement conforming to ASTM D-2564-67.   | e) Installers shall attend a Viega installation training class prior to installation.   |
| 3. Domestic Water Lines (Hot, Cold and Recirculating): All interior water lines shall be Type L hard drawn copper tubing. Copper tubing shall be assembled using solder-joint fittings or pressure seal joint fittings equal to Viega ProPress.   | 4. Solvent Weld Plastic Joints: Solvent welded according to manufacturers instructions.   |
| 4. Interior Cleanouts: Cleanouts shall be provided at the bottom of each stack, at each change in direction, and in each horizontal run at intervals not exceeding 50 feet in all interior soil, waste, and drain lines. All cleanouts shall be the same size as the line served up to 4" size and shall be 4" for all larger lines.  | C. REPAIR OF LEAKS:   |
| 5. Exterior Cleanouts: Provide and install cleanouts in exterior sewer lines where shown or as required by ordinance but not greater than 100 ft. apart. Cleanouts shall consist of a concrete encased special fitting with sewer pipes extending therefrom upward, terminating in a concrete slab. A brass countersunk cleanout ferrule shall be set on this slab in such manner as to be flush with finished grade and to provide access, through its cover, to the cleanout. Cleanouts shall be the same size as the sewer, up to 6" in size, and 4" on 6" and larger sizes. | 1. All leaks in piping systems shall be corrected as follows:   |
| 6. Air Chambers: Air chambers of Type L copper, not less than 12" long and no smaller than the supply pipe, shall be provided and installed in each water supply to each and every fixture, outlet, item of equipment, etc. The length and/or the diameter of these air chambers shall be greater where required to eliminate water hammer. PDI shock absorbers may be used if sized in accordance with PDI recommendations.  | a) Repair leaks in solder or press joints by remaking the joint; no soldering or brazing over existing joints will be permitted.  |
| 7. Vacuum Breakers: On each water supply line serving a plumbing fixture, item of equipment, or other device which has a water supply below the rim of the fixture, or which has a threaded or tubing spout, provide and install an approved vacuum breaker. These vacuum breakers shall be designed to prevent any possible backflow through them. Where these are installed in chrome plated lines, they shall be chrome plated to match.   | b) Repair leaks in screwed joints by tightening the joint; remake the joint if the tightening fails to stop the leak.   |
| B. VALVES:  | c) Repair leaks in PVC pipe by remaking the joint.  |
| 1. All valves must be lead-free according to Federal Government S 3874.   | 2. When any defect is repaired, retest that section of the system.  |
| 2. Swing Check Valves: 2" and smaller, all bronze screwed. 2-1/2" and larger, iron body, flanged, bronze trimmed.   | D. INSULATION:  |
| 3. Ball Valves: Bronze threaded body, chrome plated full port bronze ball, teflon seats and O-rings, bronze shafts, and infinite position handle with memory stops. Valve shall be two piece. Where valves are installed in insulated lines, provide extended stems of adequate length for the handle to clear the insulation and jacket. Apollo, Crane, Nibco and Milwaukee are acceptable.  | 1. Any insulation which is not applied in a workmanlike manner will be rejected and replaced. All coverings shall be smooth, flush, dressed to line and tight. Mastic shall be neatly applied and tooled. Architect reserves the right to reject any insulation whose appearance he deems unacceptable.   |
| C. HANGERS AND SUPPORTS:  | 2. Apply insulation and pipe covering after all work has been tested, found to be tight and accepted as such by the Architect. Thoroughly clean and dry all surface to be covered.  |
| 1. Support all pipes as required by the plumbing code and as required to prevent sagging. PVC lines shall be supported at 4' intervals and other pipes shall be supported on 6' intervals as a minimum. Hangers shall be clevis type with adjusters.  | 3. Factory-applied vapor-barrier jackets shall be one of the following:   |
| D. PLUMBING FIXTURES:   | a) An All Service Jacket (ASJ) laminated of flame resistant white kraft paper, glass scrim reinforcement, and kraft paper.  |
| 1. Refer to Plumbing Fixture Schedule on drawings.  | b) Foil Reinforced Kraft (FRK) Jacket laminated of flame resistant 0.001" aluminum foil, glass scrim reinforcement and kraft paper.   |
| 2. The plate numbers on the drawings represent fixtures that will be acceptable on the job. Approved manufacturers as listed below:   | 4. Insulate valves and fittings with two fiberglass inserts and preformed Manville "Zeston" covers with taped seams.  |
| a) American Standard  | 5. The following describes materials, thicknesses and finishes for insulation and coverings.  |
| b) Eljer  | 6. Domestic Cold Water, Hot Water and Circulating Lines: Insulate with 1" thick Owens-Corning Fiberglas AS/USLI-1 molded sectional glass fiber pipe covering with an All Service jacket (ASJ). Insulate concealed valves and fittings with preformed "Zeston" PVC covers over fiberglass insulation. Insulate exposed valves and fittings with Hamfab insulation fittings.  |
| c) Delta Commercial   | 7. Drain Lines: 1/2" thick flexible elastomeric insulation Closed-cell, sponge- or expanded-rubber materials. Comply with ASTM C534/C534M, Type I for tubular materials equal to Armacell Armflex. Insulation shall be installed using manufacturer recommended adhesive at all joints and fittings (taping of joints is not acceptable).   |
| d) Wade   | E. TESTING:   |
| e) T&S Brass  | 1. Test all pipes before they are concealed in furrings or chases, insulated, painted, or otherwise covered up or rendered inaccessible. Accomplish testing by sections of lines or systems, as required by conditions during construction. Clean all piping and equipment before testing.  |
| f) Watts  | 2. Domestic Water Lines Interior: Hydrostatically test for 6 hours at 150 psig. There shall be no leaks whatsoever.   |
| g) Acom   | 3. Interior Soil, Waste and Vent Lines: Drainage and venting system piping shall be tested with water before the fixtures are installed. Water test shall be applied to the drainage and venting system either in its entirety or in sections. If the entire system is tested, all openings in the pipes shall be tightly closed except the highest opening and the system shall be filled with water to the point of overflow. If the system is tested in sections, each opening except the highest opening of the section under test shall be tightly plugged, and each section shall be filled with water and tested with at least a 10 foot head of water. The water shall be kept in the system, or in the portion under test, for at least 30 minutes before the inspection starts. The system shall then be tight at all joints. Water shall not drop more than 1" in 8 hours. |
| h) Bradley  | F. DISINFECTING:  |
| i) Halsey Taylor  | 1. After cleaning, flushing and testing, the Contractor shall furnish all labor, equipment and materials necessary for the disinfection of all domestic pipe lines which shall be disinfected by the application of a chlorinating agent. The chlorinating agent may be a liquid chlorine, liquid chlorine gas water mixture, or a calcium hypochlorite solution, which shall be fed into the lines through a suitable solution feed device.  |
| j) Sloan  | 2. The chlorinating agent shall be applied at or near the point from which the line is being filled and through a corporation stop or other approved connection inserted in the horizontal axis of the newly laid pipe. The water being used to fill the line shall be controlled to flow into the section to be disinfected very slowly.   |
| k) Acom   | 3. The chlorine dose applied to the water entering the lines shall be at least 40 to 60 parts per million. The treated water shall be retained in the pipe lines for a period of not less than 24 hours. At the end of the 24 hour retention period the chlorine residual shall be at least 20 ppm. All treated water shall be thoroughly flushed from the lines until the replacement water in the lines has a chlorine residual of not more than 0.2 parts per million.   |
| l) Elkay  |   |
| m) Just   |   |
| n) Chicago  |   |
| o) Moen Commercial  |   |
| p) Kohler   |   |
| 3. All exposed trim shall be chrome plated brass. This includes faucets, fittings, stops, risers, strainers, tailpieces, traps, waste, escutcheons, flush valves, brackets, vacuum breakers, goosenecks, hole covers, bolts, nuts and etc.  |   |
| 4. All threaded supply fittings or outlets with tubing nozzles shall have back flow preventers.   |   |
| 5. All fixtures shall have quarter-turn stop valves.  |   |
| 6. Generally all wall hung fixtures shall be provided with chair carriers so that no weight is supported from the wall.   |   |
| 7. All fixtures shall be cleaned before final acceptance.   |   |
| 8. Verify mounting height of each and every fixture before rough-in.  |   |
| 9. Where fixtures mate with walls or floor, the joint shall be grouted with dental plaster, G. E. Silicone or other grout as directed by the Architect.   |   |
| 10. The Contractor shall verify all rough in heights before installation and shall secure a current ruling on heights of handicapped fixtures before rough in to insure that they meet the requirements of the parties having jurisdiction.   |   |
| 11. Controls for water closet flush valves shall be mounted on the wide side of toilet areas.   |   |
| 12. All fixtures shall meet State of Texas water saving performance standards.  |   |

| PLUMBING FIXTURE SCHEDULE     |  | FIXTURE CONNECTIONS<br>(RUNOUT LINE SIZES) |      |     |      |
|-------------------------------|--|--|------|-----|------|
| MARK                          | FIXTURE SPECIFICATION  | DCW  | DHW  | SAN | VENT |
|                               |  |  |      |     |      |
| <b>WATER CLOSETS</b>          |  |  |      |     |      |
| WC1                           | Fixture/Flushvalve: Sloan Model WETS-2020 1001-1.28, 1.28GPF HET, floor mounted elongated bowl, siphon jet and Sloan Royal 1.28 Quiet Exposed Permex Rubber Diaphragm Type Flushvalve with ADA Non-Hold-Open Handle, Free Spinning Stop Cap, No External Volume Adjustment with bolt covers. ADA compliant<br>Seat: Bemis 1955C white solid plastic open front.  | 1-1/2"                                     | 4"   | 2"  |      |
| <b>URINALS</b>                |  |  |      |     |      |
| U1                            | Fixture/Flushvalve: Sloan Model WEUS-1000.1001-0.13 Vitreous China HEU Wall Mount wash down urinal with Integral Trap and 3/4" top spud and Sloan Royal 0.13GPF Quiet Exposed Permex Rubber Diaphragm Type Flushvalve with ADA Non-Hold-Open Handle, Free Spinning Stop Cap, No External Volume Adjustment Verify mounting height with Architect. ADA compliant.<br>Carrier: Josam 17550-UR floor mounted Urinal Carrier with hanger plate, adjustable supporting rods, rectangular structural uprights and welded feet  | 3/4"                                       | 3"   | 2"  |      |
| <b>LAVATORIES</b>             |  |  |      |     |      |
| L1                            | Fixture: Sloan SS-3003 18x28 wall mount lavatory, vitreous china, front overflow, and 4" centers. ADA compliant.<br>Supply: T&S Brass B-2711, 4" Centerset Single Lever Faucet with 1/2" IPS Male Inlet Shanks, Temperature Limit Stop and Ceramic Cartridge. ADA compliant.<br>Tailpiece: McGuire 155VC Cast Brass Chrome Plated Offset Wheelchair Strainer with polished chrome cast brass elbow and 17 gauge 1-1/4" inch seamless brass offset tailpiece.<br>P-trap: McGuire 8872C-F P-trap shall be chrome plated cast brass body with cleanout, with 17 gauge seamless wall bend, slip nuts and Chrome Plated Forged Brass Set Screw Flange.<br>Stops, risers: McGuire BV2165-F Supply kit shall include commercial pattern chrome plated Quarter-Turn Brass Ball Valve with convertible loose key handle, Chrome Plated copper riser and Chrome Plated Forged Brass Set Screw Flange.<br>Protective Insulation: Truebro Lav Shield rigid enclosure to enclose all components (traps, mixing valve, etc.). Enclosure to be 0.093" nominal wall thickness, stain resistant PVC, china white color, and secured to wall with stainless steel screws. ADA Compliant.<br>Carrier: Josam 17100 floor mounted Lavatory Carrier with concealed arms, leveling and securing screws, rectangular structural uprights and welded feet | 1/2"                                       | 1/2" | 2"  | 2"   |
| L2                            | Fixture: Kohler K-2196 vitreous china 20" x 17" self rim, with 4" drillings. TAS compliant.<br>Supply: T&S Brass B-2711, 4" Centerset Single Lever Faucet with 1/2" IPS Male Inlet Shanks, Temperature Limit Stop and Ceramic Cartridge. ADA compliant.<br>Tailpiece: McGuire 155VC Cast Brass Chrome Plated Offset Wheelchair Strainer with polished chrome cast brass elbow and 17 gauge 1-1/4" inch seamless brass offset tailpiece.<br>P-trap: McGuire 8872C-F P-trap shall be chrome plated cast brass body with cleanout, with 17 gauge seamless wall bend, slip nuts and Chrome Plated Forged Brass Set Screw Flange.<br>Stops, risers: McGuire BV2165-F Supply kit shall include commercial pattern chrome plated Quarter-Turn Brass Ball Valve with convertible loose key handle, Chrome Plated copper riser and Chrome Plated Forged Brass Set Screw Flange.<br>Protective Insulation: Plumbex X4333/X4114, Insulate per ADA 4.19.4 and or IBC all exposed lavatories drain piping, hot/cold stops and supplies. Protectors will consist of molded closed cell PVC, with anti-fungal and anti-microbial properties. To be one piece continuous smooth design.  | 1/2"                                       | 1/2" | 2"  | 2"   |
| <b>ELECTRIC WATER COOLERS</b> |  |  |      |     |      |
| EWC1                          | Fixture: Elkay LVRCGRNTLBWSK EZ-H2O, stainless steel, vandal resistant, touchless sensor activated bottle filling station and bi-level drinking fountain, 8.0 GPH of 50 degree F drinking water, visual filter monitor, green counter, and mechanically activated bubbler. Verify mounting height with Architect. ADA compliant. Provide with 2 extra water filters.<br>Apron: Elkay 98324C, Cane touch apron, stainless steel construction. Apron shall extend to exactly 27" A.F.F. as per ADA requirements.<br>P-trap: McGuire 8872C P-trap shall be chrome plated cast brass body with cleanout, with 17 gauge seamless wall bend, slip nuts and Chrome Plated Set Screw Flange.<br>Stop: McGuire BV175 Supply shall include commercial pattern chrome plated Quarter-Turn Brass Ball Valve with convertible loose key handle.<br>Carrier: Josam 17560-WCBL floor mounted Water Cooler Carrier with rectangular structural uprights and welded feet/continuous smooth design.  | 1/2"                                       | 2"   | 2"  |      |
| <b>SHOWERS</b>                |  |  |      |     |      |
| SH1                           | Valve: Acorn Shower-Ware 450B type 5 surface mounted shower, temperature-pressure balancing valves, wall supply, recessed soap dish  | 1/2"                                       | 1/2" |     |      |
| SH2                           | Fixture: Acorn Shower-Ware 450BADAWH surface mounted shower, wide housing, temperature-pressure balancing valves, wall supply, fixed shower head at 48" in lieu of handheld shower, soap dish. ADA Compliant.  | 1/2"                                       | 1/2" |     |      |
| <b>SPECIALTIES</b>            |  |  |      |     |      |
| FD1                           | Fixture: Floor Drains shall be coated cast iron, two piece body, non puncturing flashing collar with weep holes and 6" adjustable satin Nkaloy round strainer equal to Josam 30000-6A. Provide all floor drains with trap seal equal to ProSet Trap Guard and install according to manufacturer's instructions.  |  |      | 2"  | 2"   |
| SD1                           | Fixture: Floor Drains shall be coated cast iron, two piece body, non puncturing flashing collar with weep holes and 5" adjustable chrome plated round strainer equal to Josam 30000-5A-CP. Provide all floor drains with trap seal equal to ProSet Trap Guard and install according to manufacturer's instructions.  |  |      | 2"  | 2"   |
| CLEANOUTS<br>CO, WCO,<br>DCO  | Floor cleanouts in finished floors shall be equal to Josam 55000-1 with medium-duty scoriated secured round satin Nkaloy Cover.<br>Floor cleanouts in floors with thin flooring shall be equal to Josam 55000-1-13 with recessed top for flooring.<br>Floor cleanouts in tiled floors shall be equal to Josam 55000-1-SQ with scoriated secured square satin Nkaloy Cover.<br>Floor cleanouts in carpeted floors shall be equal to Josam 55000-14 with scoriated secured round cover and carpet cleanout marker.<br>Floor cleanouts in unfinished areas shall be equal to Josam 55000-1-SD with special duty scoriated secured round laminated satin Nkaloy Cover.<br>Exterior cleanouts subject to heavy wheel traffic shall be equal to Josam 58680-CO Cast Iron Access Frame with anchor flanges and heavy-duty scoriated secured cover.<br>Wall cleanouts shall be concealed behind Stainless Steel access cover with screw equal to Josam 58600.  | LINE SIZE UP TO 4"                         |      |     |      |

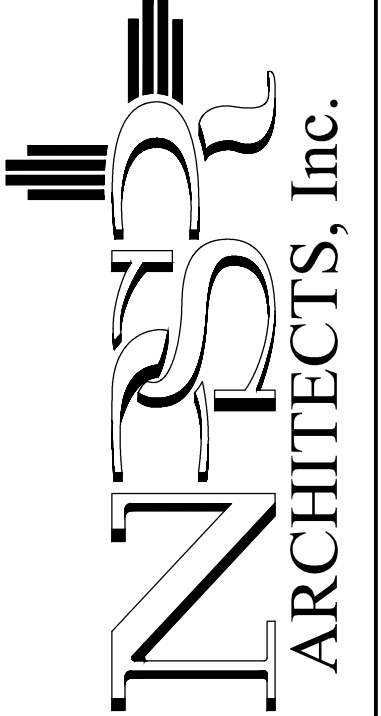
This document and the ideas and designs incorporated herein, is an instrument of professional service and is the property of NSPR Architects, Inc. It is not to be used, in whole or in part, for any other project without the written authorization of NSPR Architects, Inc.



606 WEST PIERCE ST.  
SUITE 100  
LUBBOCK, TX 79401  
PH: 806-701-5109  
FAX: 806-701-5109

220 BROADWAY ST.  
SUITE 100  
LUBBOCK, TX 79401  
PH: 806-701-5109  
FAX: 806-701-5109

www.nspr.pro



LOCKER ROOM RENOVATIONS  
FOR  
**TASKER ARENA**  
**HOBBS MUNICIPAL SCHOOLS**  
HOBBS, NEW MEXICO  
1400 E. SCHARBAUER ST.

| PROJECT NO. | DATE                   | DESCRIPTION |
|-------------|------------------------|-------------|
| 06-12-23    | ADDENDUM #1            |             |
| 08-30-23    | CONSTRUCTION DOCUMENTS |             |

| PROJECT NO. | DATE                   | DESCRIPTION |
|-------------|------------------------|-------------|
| 06-12-23    | ADDENDUM #1            |             |
| 08-30-23    | CONSTRUCTION DOCUMENTS |             |

|             |                        |             |
|-------------|------------------------|-------------|
| PROJECT NO. | DATE                   | DESCRIPTION |
| 06-12-23    | ADDENDUM #1            |             |
| 08-30-23    | CONSTRUCTION DOCUMENTS |             |

SHEET TITLE: **P104**  
**PLUMBING**  
SHEET 5 OF 5

**FINCHER ENGINEERING, LLC**  
TX FIRM #F-16408  
5621 114TH ST., SUITE 100  
LUBBOCK, TX 79424  
PH: 806-701-5109

WWW.FINCHERENG.COM



| LIGHT FIXTURE SCHEDULE |         |          |              |   |             |       |  |       |  |
|------------------------|---------|----------|--------------|---|-------------|-------|--|-------|--|
| TYPE                   | VOLTAGE | MOUNTING | MANUFACTURER | MODEL NUMBER  | LUMENS (LM) | WATTS | REMARKS  | NOTES |  |
| A                      | 120     | SURFACE  | LITHONIA     | EPANL 2X4 6000LM 80CRI 40K MIN10 ZT MVOLT - 2X4SMKSH        | 6000        | 50    | 2'x4' FLAT PANEL WITH SURFACE MOUNTING KIT                     |       |  |
| AE                     | 120     | SURFACE  | LITHONIA     | EPANL 2X4 6000LM 80CRI 40K MIN10 ZT MVOLT E10WCP - 2X4SMKSH | 6000        | 50    | SAME AS TYPE "A" EXCEPT WITH EMERGENCY BATTERY                 |       |  |
| B                      | 120     | SURFACE  | LITHONIA     | EPANL 2X4 4800LM 80CRI 40K MIN10 ZT MVOLT - 2X4SMKSH        | 4800        | 45    | 2'x4' FLAT PANEL WITH SURFACE MOUNTING KIT                     |       |  |
| BE                     | 120     | SURFACE  | LITHONIA     | EPANL 2X4 4800LM 80CRI 40K MIN10 ZT MVOLT E10WCP - 2X4SMKSH | 4800        | 45    | SAME AS TYPE "B" EXCEPT WITH EMERGENCY BATTERY                 |       |  |
| C                      | 120     | RECESSED | LITHONIA     | LDN6 40 15 L06 AR LSS MVOLT GZ10                            | 1500        | 15    | 6" ROUND LED DOWNLIGHT FIXTURE                                 |       |  |
| CE                     | 120     | RECESSED | LITHONIA     | LDN6 40 15 L06 AR LSS MVOLT GZ10 E10WCP                     | 1500        | 15    | SAME AS TYPE "C" EXCEPT WITH EMERGENCY BATTERY                 |       |  |
| D                      | 120     | RECESSED | LITHONIA     | WF6 LED 40K 90CRI WH  | 1100        | 14    | 6" ROUND LED SHOWER DOWNLIGHT FIXTURE WITH NON-CONDUCTIVE LENS |       |  |
| F                      | 120     | RECESSED | LITHONIA     | EPANL 2X4 4800LM 80CRI 40K MIN10 ZT MVOLT                   | 4800        | 45    | 2'x4' FLAT PANEL WITH DIMMING DRIVER                           |       |  |
| FE                     | 120     | RECESSED | LITHONIA     | EPANL 2X4 4800LM 80CRI 40K MIN10 ZT MVOLT E10WCP            | 4800        | 45    | SAME AS TYPE "F" EXCEPT WITH EMERGENCY BATTERY                 |       |  |
| G                      | 120     | WALL     | LITHONIA     | FMVCLS 12 MVOLT 40K 90CRI BN                                | 1500        | 15    | LED VANITY LIGHT FIXTURE                                       |       |  |
| X                      | 120     | SURFACE  | LITHONIA     | LQM S W 3 R MVOLT ELN                                       | LED         | 2     | SINGLE FACED EXIT SIGN WITH EMERGENCY BATTERY                  |       |  |

GENERAL LIGHT FIXTURE NOTES:  
A. ALL LED LIGHT FIXTURES SHALL BE RATED FOR 4000 DEGREES KELVIN UNLESS OTHERWISE NOTED.

LIGHT FIXTURE SCHEDULE NOTES:

**GENERAL NOTES**

A. VERIFY EXACT LOCATION OF ALL ELECTRICAL EQUIPMENT WITH OWNER AND ARCHITECT PRIOR TO INSTALLATION.

B. VERIFY ALL ELECTRICAL INSTALLATIONS WITH LOCAL CODES AND CITY ORDINANCES PRIOR TO INSTALLATION.

C. VERIFY AND COORDINATE EXACT LOCATION OF ALL LIGHT FIXTURE LOCATIONS AND MOUNTING HEIGHTS WITH ARCHITECTURAL REFLECTED CEILING PLAN.

D. ANY OUTLET, SWITCH, RECEPTACLE, FIXTURE OR PANEL MAY BE RELOCATED WITHIN A TEN (10) FOOT RADIUS OF THE INDICATED LOCATION WITHOUT ADDITIONAL CHARGE TO OWNER.

E. PROVIDE AN UN-SWITCHED HOT (BALLAST/DRIVER) TO ALL EMERGENCY FIXTURES ROUTED THRU LIGHTING CONTROLS TO PROVIDE EMERGENCY OPERATION.

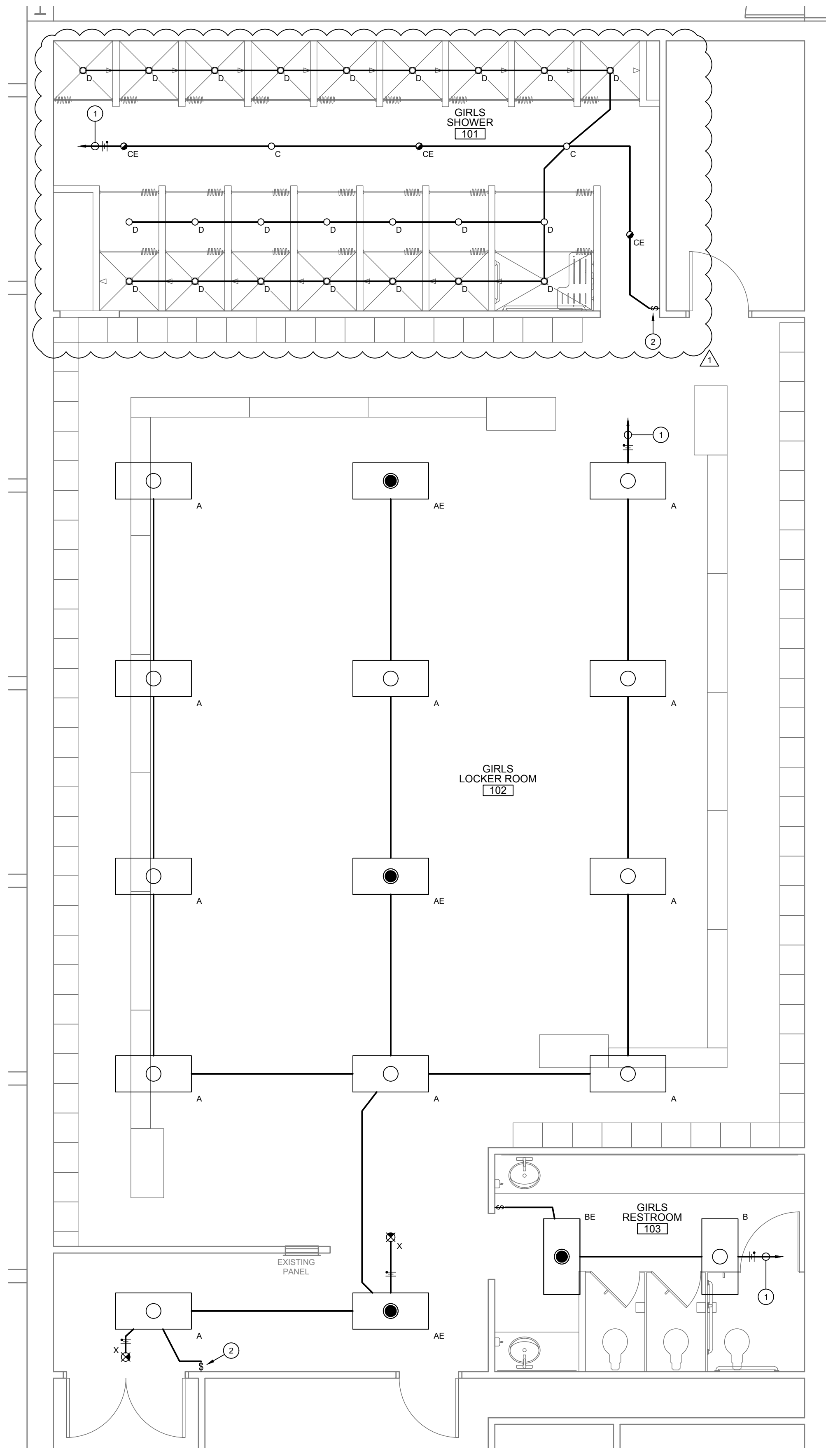
F. PROVIDE DEDICATED NEUTRAL WIRE FOR EACH 120V CIRCUIT BREAKER.

G. LIGHTING CONTROL WIRING SHALL BE ROUTED IN SEPARATE CONDUIT/PATHWAY FROM POWER WIRING.

**KEYED NOTES**

1. EXTEND AND CONNECT TO EXISTING BRANCH LIGHTING CIRCUIT SERVING AREA.

2. COORDINATE EXACT LOCATION OF LIGHT SWITCH WITH ARCHITECT AND OWNER.



**1 ENLARGED PARTIAL FLOOR PLAN - LIGHTING**  
Scale: 1/4" = 1'-0"



**FINCHER ENGINEERING, LLC**  
TX FIRM #F-16408  
5621 114TH ST., SUITE 100  
LUBBOCK, TX 79424  
PH: 806-701-5109  
WWW.FINCHERENG.COM

**LOCKER ROOM RENOVATIONS**  
FOR  
**TASKER ARENA**  
**HOBBS MUNICIPAL SCHOOLS**  
HOBBS, NEW MEXICO  
1400 E. SCHARBAUER ST.

**NPSR**  
ARCHITECTS, Inc.

66 WEST PIERCE ST.  
HOUSTON, TX 77002  
PH: 575.885.4775  
FAX: 575.885.4827

220 BROADWAY ST.  
SUITE 400  
HOUSTON, TX 77002  
PH: 575.433.4775  
FAX: 575.433.4777  
www.npsr.pro

PROJECT NO. \_\_\_\_\_  
DRAWN BY: FFE  
CHKD BY: FFE  
APPROVD BY: FFE

DATE: \_\_\_\_\_  
DESCRIPTION: \_\_\_\_\_

SHEET TITLE: **E101**  
**ELECTRICAL**  
SHEET 3 OF 8

This document and the ideas and designs incorporated herein, is an instrument of professional service and is the property of NPSR Architects, Inc. It is not to be used, in whole or in part, for any other project without the written authorization of NPSR Architects, Inc.